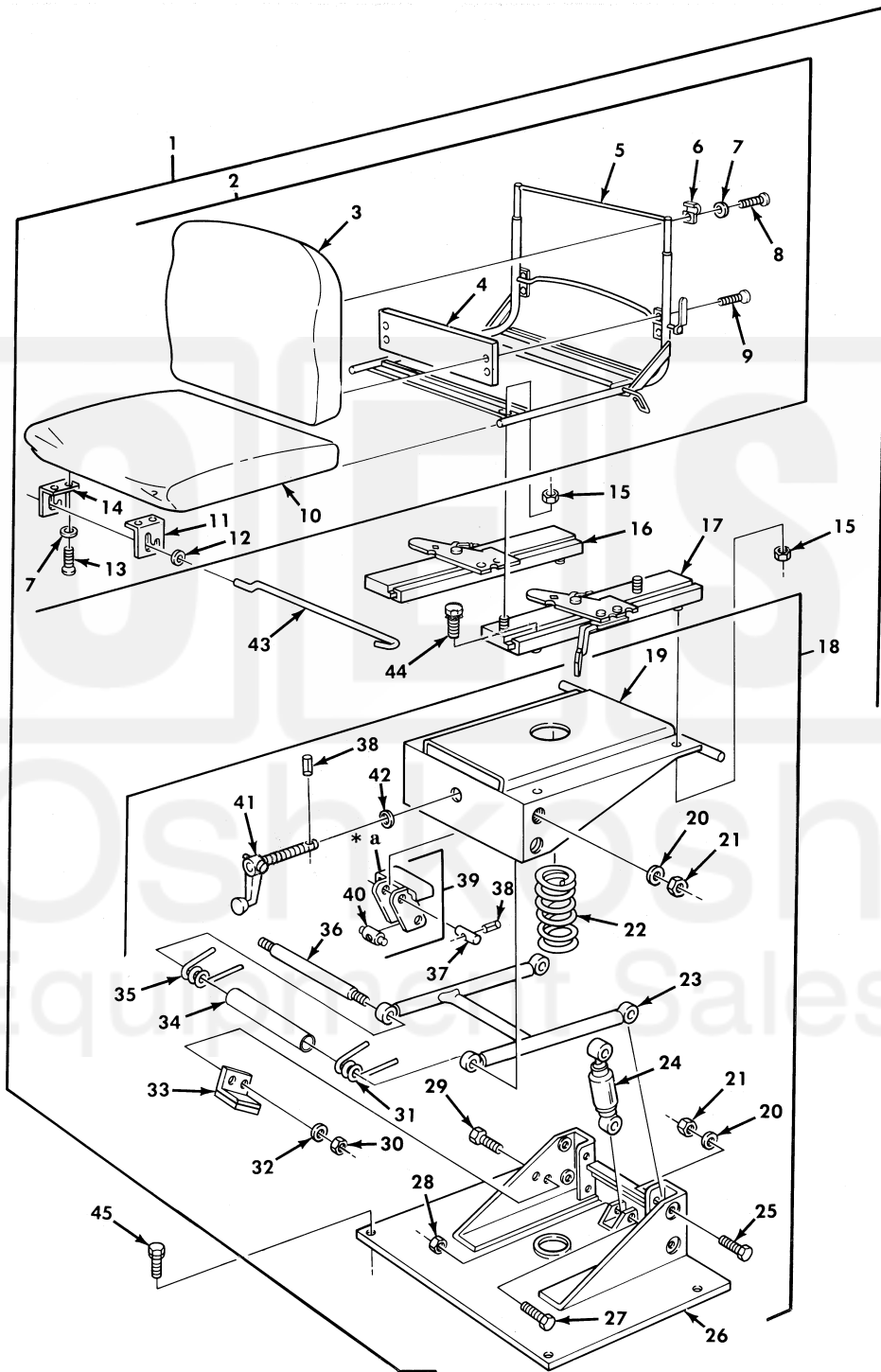


UNIT, DIRECT SUPPORT, AND GENERAL SUPPORT MAINTENANCE  
REPAIR PARTS AND SPECIAL TOOLS LIST  
TRUCK, 5-TON, 6X6, M809 SERIES TRUCKS (DIESEL)



\* a PART OF ITEM 39

Figure 266. Operator's Seat Assembly.

(1) ITEM NO	(2) SMR CODE	(3) NSN	(4) CAGEC	(5) PART NUMBER	(6) DESCRIPTION AND USABLE ON CODE (UOC)	(7) QTY
GROUP 1806 SEATS						
FIG. 266 OPERATOR'S SEAT ASSEMBLY						
1	AOFFF	2540-00-407-2610	19207	11640442	SEAT, VEHICULAR.....	1
2	PFOFF	2540-01-063-5830	19207	11663385	.. SEAT, VEHICULAR.....	1
3	PAOZZ	2540-00-460-5826	19207	11640526	.. CUSHION, SEAT BACK, V.....	1
4	PAOZZ	2540-00-436-8289	19207	11640513	.. SUPPORT, SEAT, VEHICU.....	1
5	PBOZZ	2540-01-108-5052	19207	11640521	.. FRAME, SEAT, VEHICULA.....	1
6	PAOZZ	5340-00-004-6854	19207	11640507	.. STRAP, RETAINING.....	2
7	PAOZZ	5310-00-550-1130	96906	MS35333-40	.. WASHER, LOCK.....	2
8	PAOZZ	5305-00-988-1725	96906	MS35206-281	.. SCREW, MACHINE.....	2
9	PAOZZ	5305-00-954-4295	96906	MS35190-287	.. SCREW, MACHINE.....	4
10	PAOZZ	2540-00-460-5815	19207	11640522	.. CUSHION, SEAT, VEHICU.....	1
11	PAOZZ	5340-00-757-5877	19207	11640504-1	.. BRACKET, ANGLE.....	1
12	PAOZZ	5310-00-809-3078	96906	MS27183-11	.. WASHER, FLAT.....	2
13	PAOZZ	5305-00-988-1726	96906	MS35206-282	.. SCREW, MACHINE.....	4
14	PAOZZ	5340-00-757-5901	19207	11640504-2	.. BRACKET, ANGLE.....	1
15	PAOZZ	5310-00-984-3807	96906	MS51922-13	.. NUT, SELF-LOCKING, HE.....	6
16	PAOZZ	2540-01-117-3025	70523	27189	.. ADJUSTER ASSEMBLY LEFT HAND.....	1
17	PAOZZ	2540-01-117-4882	70523	27190	.. ADJUSTER ASSEMBLY RIGHT HAND.....	1
18	AOFFF		19207	11640523-2	.. PEDESTAL, SEAT.....	1
19	PFFZZ	2540-01-286-7673	19207	11640524-1	.. FRAME, SEAT, VEHICULA.....	1
20	PAFZZ	5310-00-584-5272	96906	MS35338-48	.. WASHER, LOCK.....	8
21	PAFZZ	5310-00-768-0318	96906	MS51967-14	.. NUT, PLAIN, HEXAGON.....	8
22	PAFZZ	5360-00-832-0178	19207	11640508	.. SPRING, HELICAL, COMP.....	1
23	PFFZZ	2540-00-470-1564	19207	11640520	.. FRAME, SEAT, VEHICULA.....	1
24	PFFZZ	2510-00-489-7104	19207	11640514	.. SHOCK ABSORBER, DIRE.....	1
25	PAFZZ	5306-00-020-0857	19207	11663341	.. BOLT, SHOULDER.....	6
26	XDFZZ		19207	11640525	.. FRAME ASSEMBLY.....	1
27	PAFZZ	5306-00-020-1058	19207	11662487	.. BOLT, SHOULDER.....	2
28	PAFZZ	5310-00-880-7744	96906	MS51967-5	.. NUT, PLAIN, HEXAGON.....	2
29	PAFZZ	5305-00-068-0502	96906	MS90725-6	.. SCREW, CAP, HEXAGON H.....	4
30	PAFZZ	5310-00-761-6882	96906	MS51967-2	.. NUT, PLAIN, HEXAGON.....	4
31	PAFZZ	5360-00-482-4813	19207	11640515-1	.. SPRING, HELICAL, TORS LEFT.....	1
32	PAFZZ	5310-00-550-1130	96906	MS35333-40	.. WASHER, LOCK.....	4
33	PAFZZ	5340-00-470-1537	19207	11662489	.. BRACKET, ANGLE.....	2
34	PFFZZ	3120-01-280-6050	19207	12302671	.. SLEEVE.....	1
35	PFFZZ	5360-00-482-4814	19207	11640515-2	.. SPRING, HELICAL, TORS RIGHT.....	1
36	PFFZZ	5307-00-102-0962	19207	11640510	.. STUD, SHOULDERED.....	1
37	PAFZZ	5315-00-171-2590	19207	11640506	.. PIN, STRAIGHT, HEADLE.....	1
38	PAFZZ	5315-00-843-7987	96906	MS16562-37	.. PIN, SPRING.....	2
39	PFFFZ	2540-01-130-7946	19207	11640512	.. SUPPORT, SEAT, VEHICU.....	1
40	PAFZZ	5315-01-259-2517	19207	11641043	.. PIN, SHOULDER, HEADLE.....	1
41	PFFZZ	5342-00-470-1543	19207	11640516	.. HANDLE, SEAT CONTRO.....	1
42	PAFZZ	5310-00-001-4719	19207	11663036	.. WASHER, SADDLE.....	1
43	PAFZZ	5340-01-117-3793	19207	11669053	.. STEEL WIRE.....	1
44	PAOZZ	5305-00-042-3561	24617	423561	.. SCREW, ASSEMBLED WAS.....	2
45	PAOZZ	5305-01-104-9018	19207	11663070	.. SCREW, ASSEMBLED WAS.....	4

END OF FIGURE